

North Karelia

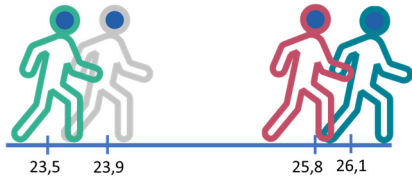
Country: Finland

Urban-rural typology: Predominantly rural region (rural population is 50% or more of the total population)

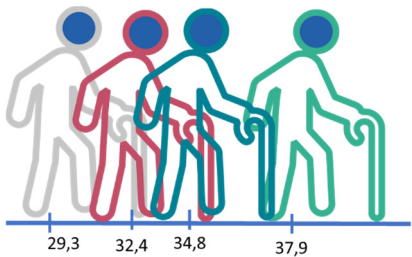
Total population (2016): 164 755 inhabitants

Population density (2016): 7,6 inhab./ km²

Youth dependency ratio



Elderly dependency ratio



2016 value

Case study
MAMBA average
National average
EU average

2011-2016 change

Increase
Decrease

The dependency ratio is a measure of the population structure. It provides a ratio of the population not in the labour force ("the dependent part", ages 0 to 14 and 65 and more) and the population typically in the labour force (ages 15 to 64). The two age dependency ratios are commonly used to measure the pressure on productive population.

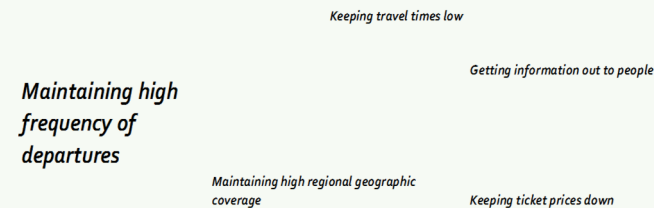
Mini Survey on Accessibility

Text scaled in relation to the rating of the factor (1-3).

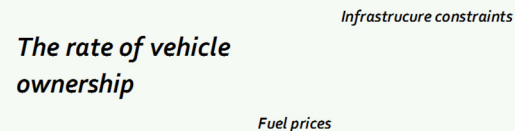
What are the challenges related to distance?



What are the challenges related to public transport system?



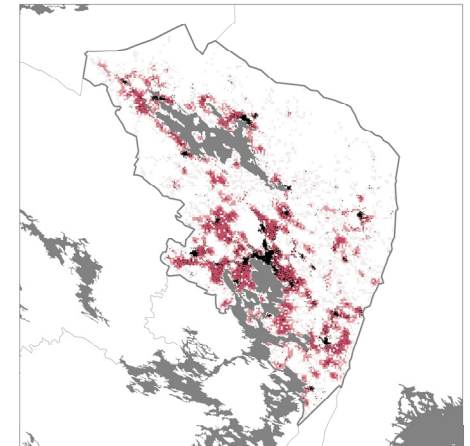
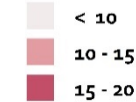
What are the challenges related to private vehicle transport?



Population clusters
(1 dot = 20 people)

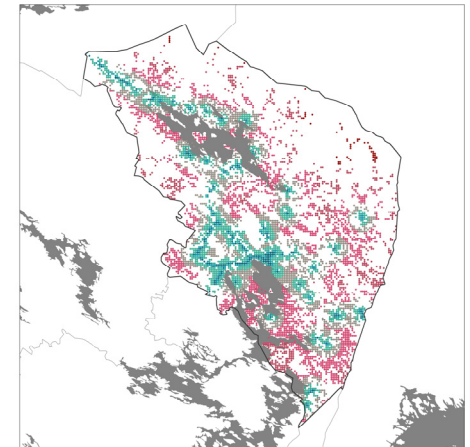
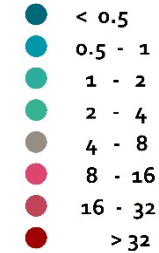
Contiguous areas of low dense population.

km2



'Bee-line' distance to public transport stop.

km



Number of facilities within 2 km.

Frequency

