

Bielsko

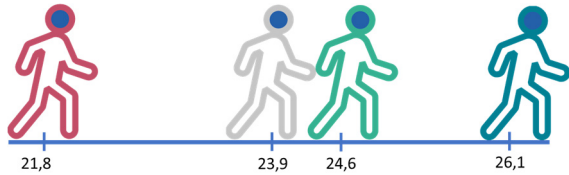
Country: Poland

Urban-rural typology: Intermediate region (the rural population is between 20% and 50% of the total population)

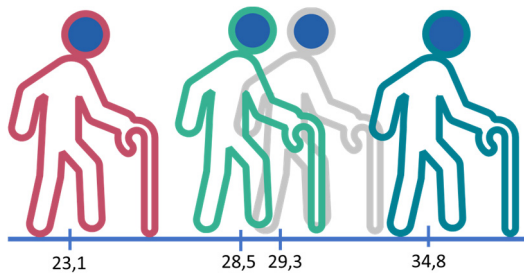
Total population (2016): 162 926 inhabitants ↑

Population density (2016): 355,0 inhab./ km² ↑

Youth dependency ratio



Elderly dependency ratio



2016 value

Case study
MAMBA average
National average
EU average

2011-2016 change

Increase
Decrease

The dependency ratio is a measure of the population structure. It provides a ratio of the population not in the labour force ("the dependent part", ages 0 to 14 and 65 and more) and the population typically in the labour force (ages 15 to 64). The two age dependency ratios are commonly used to measure the pressure on productive population.



Mini Survey on Accessibility

Text scaled in relation to the rating of the factor (1-3).
Quotes in red

What are the challenges related to distance?

Overall distances

Services for the elderly

Youth activities

Job opportunities

"Progressing marginalisation in comparison with the capital of the region"

What are the challenges related to public transport system?

Keeping travel times low
Getting information out to people

Maintaining high frequency of departures

Keeping ticket prices down

Maintaining high regional geographic coverage

What are the challenges related to private vehicle transport?

Infrastructure constraints

The rate of vehicle ownership

Fuel prices

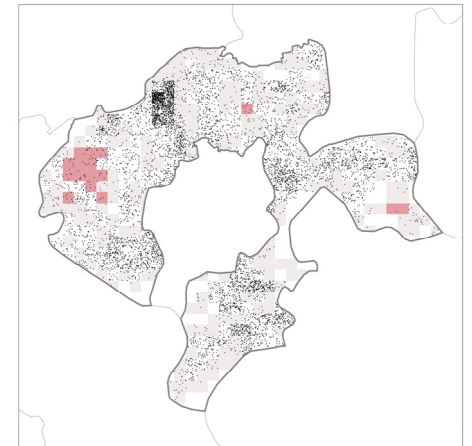
"Parking places (too few and too small); Quality of roads and maintenance; Weather conditions"

Population clusters
(1 dot = 20 people)

Contiguous areas of low dense population.

km²

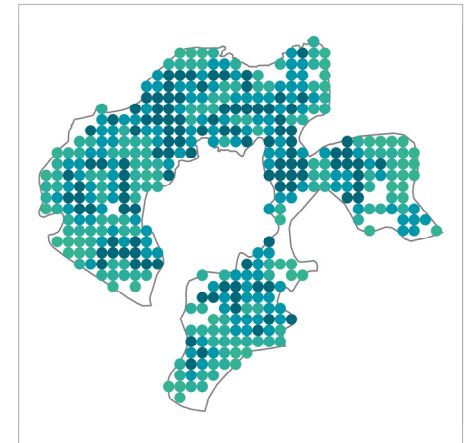
- < 10
- 10 - 15
- 15 - 20



'Bee-line' distance to public transport stop.

km

- < 0.5
- 0.5 - 1
- 1 - 2
- 2 - 4
- 4 - 8
- 8 - 16
- 16 - 32
- > 32



Number of facilities within 2 km.

Frequency

- 5 - 50
- 50 - 100
- 100 - 250
- > 250

